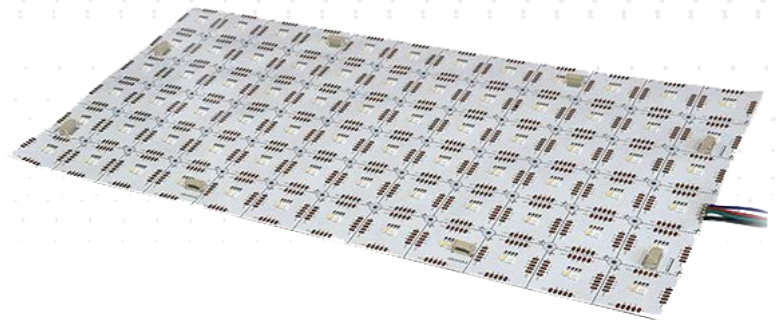
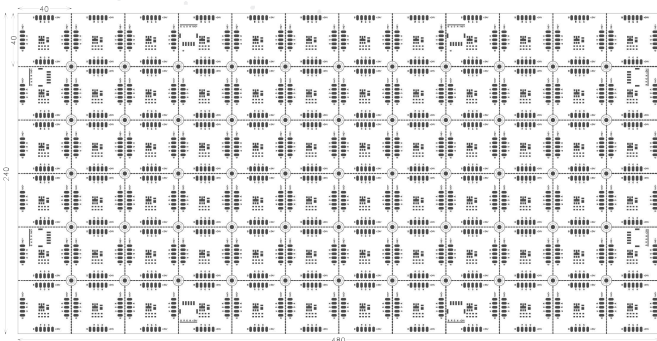


RGB LightPaper

- Thin, lightweight, flexible, cuttable light sheets
- Suited for shallow setback of 2" - 4"
- For walls, ceilings, curved structures and custom shapes
- Color Changing RGB
- Multiple Lumen Packages and Wattages



The versatility of RGB eos LightPaper allows use in a large number of applications:



HOSPITALITY



RESIDENTIAL



COMMERCIAL INTERIOR



CUSTOM FIXTURES



MILLWORK



TASK LIGHTING



LOGOS AND SIGNAGE



COVE LIGHTING



RETAIL



BRANDING



ACCENT LIGHTING



HEALTHCARE

General Specifications

FLEXIBLE TECHNOLOGY :

LightPaper is versatile, flexible and thin LED technology that can wrap around curved surfaces or be cut into custom shapes

PAPER SIZE :

Each sheet is 19" x 9.5" and seamlessly expandable via Molex® connectors up to 80W per driver. Can be cut at the factory or in the field into 1.57" squares.

SETBACK :

RGB LightPaper is suited for shallow setback of just 2" - 4" depth.

LONG LIFE :

Over 50,000 hours = Nearly 12 years based on 12 hours a day. Once installed, LightPaper is virtually maintenance free.

POWER OPTIONS:

24VDC Adapter

DRIVER INPUT VOLTAGE :

24VDC/120V-277V Universal AC Input

LUMENS & WATTAGE (See page 3):

4W - 18W per sq ft

150- 650 Lumens per sq ft

DIMMABLE :

LightPaper is dimmable when matched with Dimmable Power Supplies. (DMX/DALI)

LEDs :

ANSI Binned LEDs from Tier 1 Suppliers
LED CRT - RGB

WIRE GAUGE:

18 AWG Wire

DAMP LOCATION :

LightPaper is Damp Location Rated when driven with a Class 2 Power Supply

HOSPITAL AND MRI SAFE :

The system contains non-ferrous materials, making LightPaper safe for MRI suites. The LightPaper Power supply must be installed remotely, up to 30 feet from the application.

SERVICE AND INSTALLATION :

LightPaper is field serviceable, and can be precut by our production team to customer specifications.



Up to 18W, >650 Lumens per sq ft for signage & architecturally decorative objects



Dimmable, energy-efficient and cool-running



Lightweight, Easy-Install



Quick, easy installation in indoor applications



APPROVALS AND CERTIFICATIONS:

The LightPaper System is UL listed for Architectural applications and UL recognized for signage. All power supplies are UL / ETL listed.



DIMMABLE



DAMP LOCATION



LISTED
LOW VOLTAGE LUMINAIRE
E480527

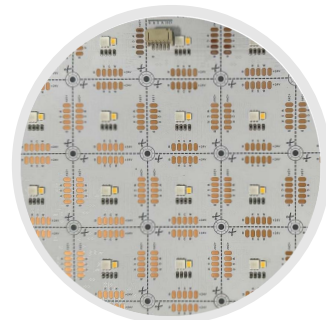
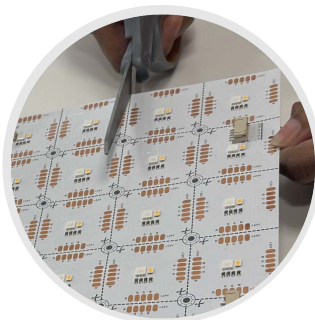


E467626



RoHS

Molex is a registered trademark of Molex, LLC.





Product Specification Ordering Form

NAME:	PROJECT NAME:	ADDRESS:
PHONE:	PROJECT LOCATION:	CITY:
EMAIL:	ANTICIPATED DELIVERY DATE:	ZIP CODE:
COMPANY NAME:	PROJECT SPECIFIER:	RUSH PROJECT: <input type="checkbox"/> Yes <input type="checkbox"/> No

A	B	C	D	E	F	G1	G2	H	I	J
↓	↓	↓	↓	↓	↓	↓	↓	↓	↓	↓
LIGHTPAPER	FLEXIBLE	LED CHIPTYPE	INDOOR + LED QTY	COLOR TEMP	VOLTAGE	ILLUMINATED AREA LENGTH X HEIGHT (IN M OR CM)		LIGHTPAPER TYPE	5-DIGIT PROJECT #	REVISION # Z
PPR	S	5050	1144	RGB	24	G1xG2		RGB650	YYYYY	REVZ

A MATERIAL
PPR- LightPaper

B RIGIDITY
S- Flexible

C LED CHIPTYPE
5050 - Chip Type

D LED QTY
I - Damp Location/Indoor
144 - LED Chips per Sheet

E COLOR TEMP
RGB - RGB

F VOLTAGE
24- 24VDC (w/ UNV 120-277V Driver)

G ILLUMINATED AREA
G1 - Length in meters or centimeters
G2 - Height in meters or centimeters

H LIGHTPAPER TYPE
RGB - RGB w/ lumen packages indicated

I PROJECT #
YYYYY - 5-Digit Project #

J REVISION #
REVZ - REVISION # Z

Code for above Column H	Full LightPaper reference name	Precise Lumens Per 480mm x 240mm Sheet	Wattage per 480mm x 240mm Sheet
RGB650	RGB LightPaper 650	650	18
RGB450	RGB LightPaper 450	450	12
RGB300	RGB LightPaper 300	300	9
RGB150	RGB LightPaper 150	150	4



PROJECT NAME:

PROJECT LOCATION:

Please fill out the form

A	B	C	D	E	F	G1	G2	H	I	J
LIGHTPAPER	FLEXIBLE	LED CHIP TYPE	INDOOR + LED QTY	COLOR TEMP OPTIONS	VOLTAGE	ILLUMINATED AREA	LIGHTPAPER TYPE	5-DIGIT PROJECT #	REVISION #Z	
PPR	S	5050	I144	RGB	24	G1xG2	RGB650	YYYYY	REVZ	

1. What is the Application the LightPaper will be used for?
 E.g.: Hospitality, Retail, Signage Etc.

2. What are the LightPaper backlighting?
 E.g.: Stone, Graphic, Glass, Acrylic Etc.

3. Are there any installation details to review?

4. Is there an existing Dimming or Lighting Control System?
 If so, please provide Representative with information of the Control system (specs, manufacturer, etc.)

Additional information: