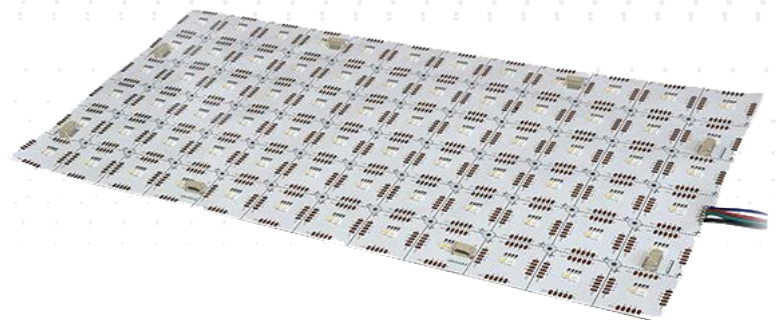
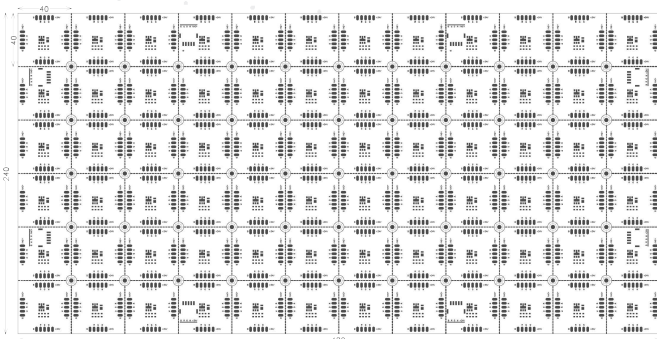


RGBW LightPaper

- Thin, lightweight, flexible, cuttable light sheets
- Suited for shallow setback starting at 1/4"
- For walls, ceilings, curved structures and custom shapes
- Color Changing RGB plus dedicated white in 2700K, 3000K, 4000K or 6000K
- Multiple Lumen Packages and Wattages
- 90+ CRI



The versatility of RGBW eos LightPaper allows use in a large number of applications:



HOSPITALITY



RESIDENTIAL



COMMERCIAL INTERIOR



CUSTOM FIXTURES



MILLWORK



TASK LIGHTING



LOGOS AND SIGNAGE



COVE LIGHTING



RETAIL



BRANDING



ACCENT LIGHTING



HEALTHCARE

General Specifications

FLEXIBLE TECHNOLOGY :

LightPaper is versatile, flexible and thin LED technology that can wrap around curved surfaces or be cut into custom shapes

PAPER SIZE :

Each sheet is 19" x 9.5" and seamlessly expandable via Molex® connectors up to 80W per driver. Can be cut at the factory or in the field into 1.57" squares.

SETBACK :

RGBW LightPaper is suited for shallow setback starting at 1/4", depending on the transparency of the illuminated material; most can be evenly illuminated w/ 1 - 2" setback. We fully recommend creating a mock up prior to specifying the job. Contact your EOS agent for assistance.

LONG LIFE :

Over 50,000 hours = Nearly 12 years based on 12 hours a day. Once installed, LightPaper is virtually maintenance free.

CRI :

90+ CRI

POWER OPTIONS:

24VDC Adapter

DRIVER INPUT VOLTAGE :

24VDC/120V-277V Universal AC Input

LUMENS & WATTAGE (See page 3):

4W - 15W per sq ft

150 - 650 Lumens per sq ft

DIMMABLE :

LightPaper is dimmable when matched with Dimmable Power Supplies. (DMX/DALI)

LEDs :

ANSI Binned LEDs from Tier 1 Suppliers
LED CRI > 90+
LED CRT - RGB+2700K, RGB+3000K, RGB+4000K, RGB+6000K

WIRE GAUGE:

22 AWG Wire

DAMP LOCATION :

LightPaper is Damp Location Rated when driven with a Class 2 Power Supply

HOSPITAL AND MRI SAFE :

The system contains non-ferrous materials, making LightPaper safe for MRI suites. The LightPaper Power supply must be installed remotely, up to 30 feet from the application.

SERVICE AND INSTALLATION :

LightPaper is field serviceable, and can be pre-cut by our production team to customer specifications.

LIMITED WARRANTY :

3 Years - See Website for full details.



Up to 15W, >650 Lumens per sq ft for signage & architecturally decorative objects



Dimmable, energy-efficient and cool-running



Lightweight, Easy-Install



Quick, easy installation in indoor applications



APPROVALS AND CERTIFICATIONS:

The LightPaper System is UL listed for Architectural applications and UL recognized for signage. All power supplies are UL / ETL listed.



DIMMABLE



DAMP LOCATION



LOW VOLTAGE LUMINAIRE
E480527

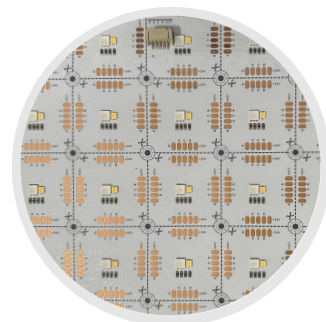
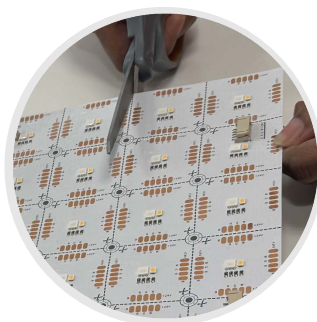


E467626



RoHS

Molex is a registered trademark of Molex, LLC.





Product Specification Ordering Form

NAME: PROJECT NAME: ADDRESS:

PHONE: PROJECT LOCATION: CITY:

EMAIL: ANTICIPATED DELIVERY DATE: ZIP CODE:

COMPANY NAME: PROJECT SPECIFIER: RUSH PROJECT: Yes No

A	B	C	D	E	F	G1	G2	H	I	J
LIGHTPAPER	FLEXIBLE	LED CHIP TYPE	INDOOR + LED QTY	COLOR TEMP	VOLTAGE	ILLUMINATED AREA LENGTH X HEIGHT (IN INCHES)		LIGHTPAPER TYPE	5-DIGIT PROJECT #	REVISION # Z
PPR	S	5050	1144	RGB-2700K	24	G1xG2		RGBW450	YYYYY	REVZ

A MATERIAL

PPR- LightPaper

B RIGIDITY

S- Flexible

C LED CHIP TYPE

5050 - Chip Type

D LED QTY

I - Damp Location/Indoor
144 - LED Chips per Sheet

E COLOR TEMP

RGB-2700K - RGB + 2700K
RGB-3000K - RGB + 3000K
RGB-4000K - RGB + 4000K
RGB-6000K - RGB + 6000K

F VOLTAGE

24- 24VDC (w/ UNV 120-277V Driver)

G ILLUMINATED AREA

G1 - Length in inches
G2 - Height in inches

H LIGHTPAPER TYPE

RGBW - RGBW w/ lumen
packages indicated

I PROJECT

YYYYY - 5-Digit Project #

J REVISION

REVZ - REVISION # Z



PROJECT NAME:

PROJECT LOCATION:

Please fill out the form

A	B	C	D	E	F	G1	G2	H	I	J
LIGHTPAPER	FLEXIBLE	LED CHIP TYPE	INDOOR + LED QTY	COLOR TEMP OPTIONS	VOLTAGE	ILLUMINATED AREA	LIGHTPAPER TYPE	5-DIGIT PROJECT #	REVISION #Z	
PPR	S	5050	I144	RGB-2700K	24	G1xG2	RGBW450	YYYYY	REVZ	

1. What is the Application the LightPaper will be used for?
 E.g.: Hospitality, Retail, Signage Etc.

2. What are the LightPaper backlighting?
 E.g.: Stone, Graphic, Glass, Acrylic Etc.

3. Are there any installation details to review?

4. Is there an existing Dimming or Lighting Control System?
 If so, please provide Representative with information of the Control system (specs, manufacturer, etc.)

Additional information: